



To: City Council

From: D. Blackburn, City Manager

Date: March 12, 2010

Re: February Temple Economic Indicator Report Highlights

Attached is the February 2010 Temple Economic Indicator Report. Below are several highlights of this month's report:

- **Sales Tax revenue for the month of February (for January sales) experienced a 0.81% decrease from February 2009 data. (pg. 1)**
- **Applications for new single family home permits totaled 38 for the month of February, 72.73% higher than prior year. Year-to-date permit applications total 84.69% above 2009, 19.87% above 2008, and 15.02% below 2003 data. (pg. 3)**
- **Solid Waste tonnage for commercial collection is up year-to-date 3.92% from prior year, roll off collection is down year-to-date 10.76% from prior year, and residential collection is up year-to-date 5.41% over prior year-to-date totals. (pgs. 4-6)**
- **New residential and commercial water taps for the month of February total 44, 62.96% above prior year. Year-to-date taps total 61.98% above 2009 and 14.04% below 2008. (pg. 7)**
- **January hotel-motel occupancy rates were down 3.23% from the prior year quarter average, but hotel-motel tax receipts for the month of January were up 8.29% from January 2009. (pgs. 9-10)**

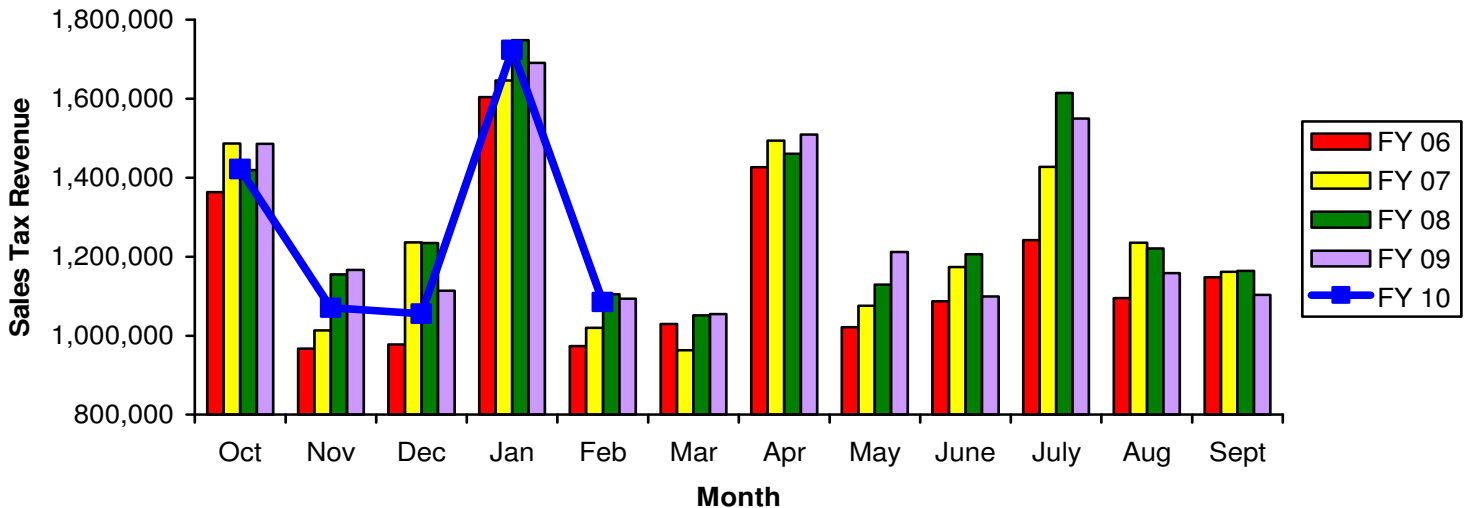


City of Temple Temple Economic Indicator Report

February 2010

Sales Tax

Sales Tax Revenue

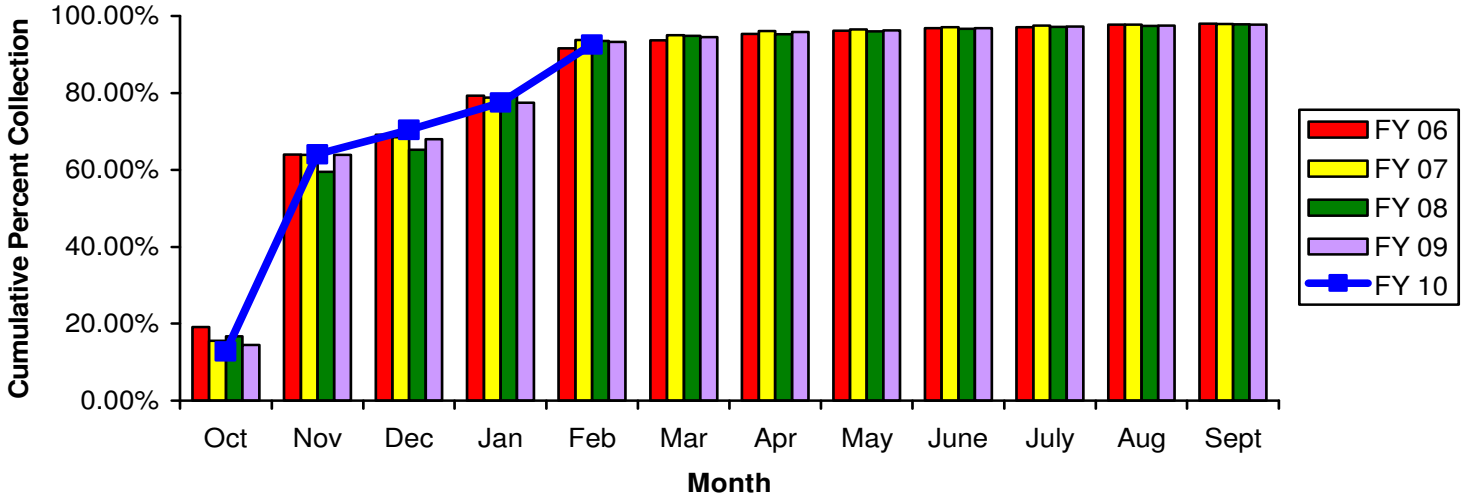


Sales Tax Revenue (Source: City of Temple Finance Department)

	FY 06	FY 07	FY 08	FY 09	FY 10	% Variance
Oct	1,362,652	1,487,129	1,419,096	1,485,778	1,422,026	-4.29%
Nov	967,050	1,014,056	1,155,106	1,165,941	1,070,438	-8.19%
Dec	977,379	1,236,183	1,234,613	1,113,925	1,055,403	-5.25%
Jan	1,604,189	1,646,644	1,748,932	1,691,046	1,724,078	1.95%
Feb	973,333	1,020,046	1,105,271	1,094,010	1,085,180	-0.81%
Mar	1,029,374	962,661	1,051,732	1,054,277		
Apr	1,426,578	1,494,007	1,460,754	1,509,532		
May	1,021,650	1,075,166	1,129,422	1,212,407		
June	1,086,355	1,173,450	1,206,717	1,099,533		
July	1,242,117	1,426,977	1,614,365	1,550,197		
Aug	1,095,407	1,235,561	1,221,187	1,158,194		
Sept	1,148,136	1,161,746	1,163,717	1,103,971		
YTD Total	5,884,603	6,404,058	6,663,018	6,550,700	6,357,125	-2.96%

Property Tax

Property Tax Collection Rate (Cumulative Percent)

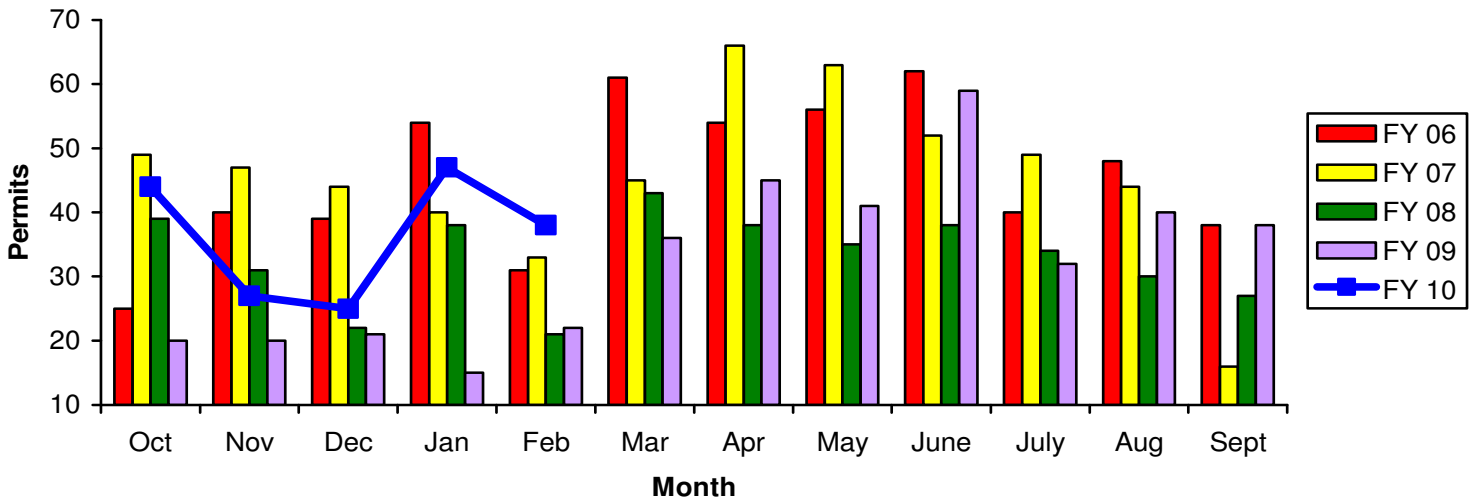


Property Tax Collection Rate (Cumulative Percent) (Source: City of Temple Finance Department)

	FY 06	FY 07	FY 08	FY 09	FY 10	% Variance
Oct	19.14%	15.60%	16.72%	14.48%	12.77%	-11.81%
Nov	64.01%	63.91%	59.56%	63.93%	64.04%	0.17%
Dec	69.14%	68.48%	65.21%	68.03%	70.41%	3.50%
Jan	79.33%	78.78%	79.60%	77.49%	77.47%	-0.03%
Feb	91.56%	93.80%	93.58%	93.21%	92.57%	-0.69%
Mar	93.77%	95.09%	94.91%	94.57%		
Apr	95.38%	96.12%	95.31%	95.87%		
May	96.22%	96.53%	96.01%	96.30%		
June	96.84%	97.14%	96.69%	96.86%		
July	97.14%	97.50%	97.23%	97.30%		
Aug	97.76%	97.80%	97.44%	97.54%		
Sept	97.99%	97.98%	97.84%	97.79%		

Building Permits- Single Family

New Single-Family Home Permit Applicants

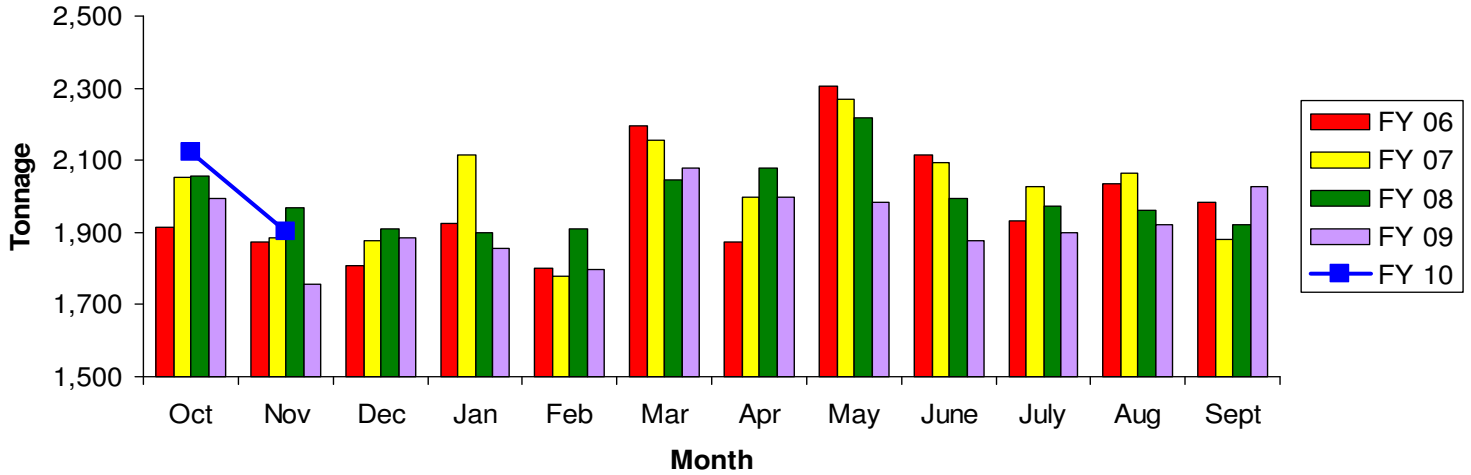


New Single-Family Home Permit Applicants (Source: City of Temple Construction Safety Department)

	FY 06	FY 07	FY 08	FY 09	FY 10	% Variance
Oct	25	49	39	20	44	120.00%
Nov	40	47	31	20	27	35.00%
Dec	39	44	22	21	25	19.05%
Jan	54	40	38	15	47	213.33%
Feb	31	33	21	22	38	72.73%
Mar	61	45	43	36		
Apr	54	66	38	45		
May	56	63	35	41		
June	62	52	38	59		
July	40	49	34	32		
Aug	48	44	30	40		
Sept	38	16	27	38		
YTD Total	189	213	151	98	181	84.69%

Solid Waste Tonnage- Commercial

Tons Collected- Commercial



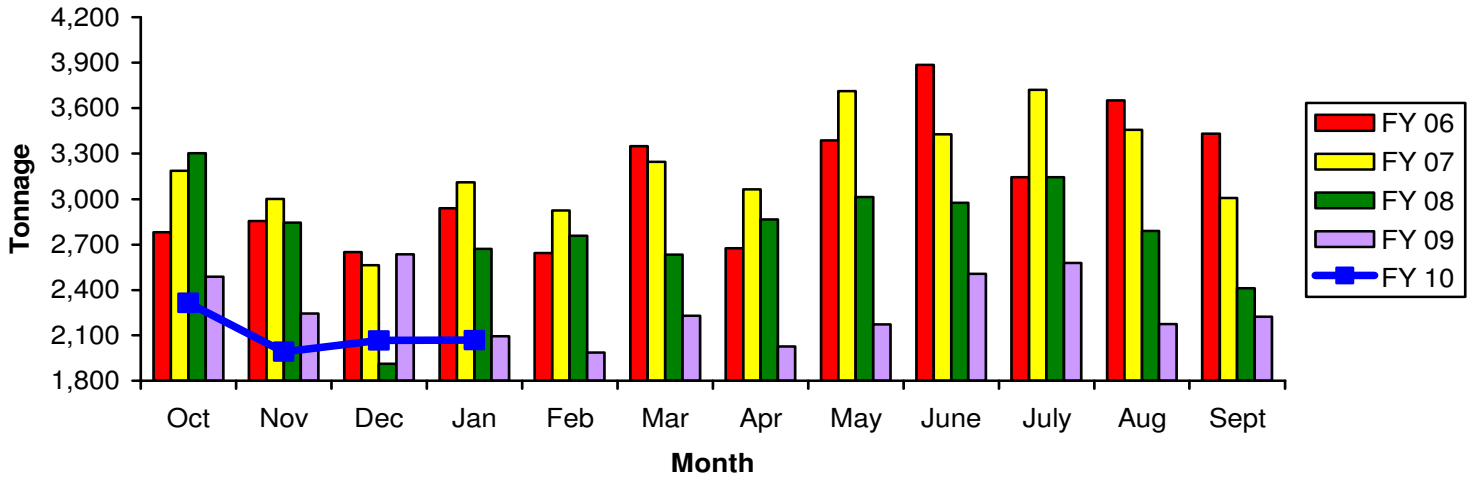
Tons Collected (Source: City of Temple Public Works Department)

Commercial (Front and Sideload)

	FY 06	FY 07	FY 08	FY 09	FY 10	% Variance
Oct	1,913	2,052	2,058	1,993	2,123	6.54%
Nov	1,872	1,885	1,969	1,758	1,903	8.24%
Dec	1,809	1,876	1,912	1,883	1,890	0.35%
Jan	1,924	2,114	1,901	1,857	1,869	0.65%
Feb	1,802	1,780	1,912	1,795	not yet available	
Mar	2,196	2,156	2,047	2,079		
Apr	1,873	1,998	2,078	1,999		
May	2,305	2,269	2,218	1,982		
June	2,115	2,093	1,993	1,877		
July	1,933	2,027	1,972	1,898		
Aug	2,035	2,063	1,960	1,923		
Sept	1,984	1,881	1,923	2,027		
YTD Total	7,518	7,927	7,839	7,491	7,785	3.92%

Solid Waste Tonnage- Roll Off

Tons Collected- Roll Off



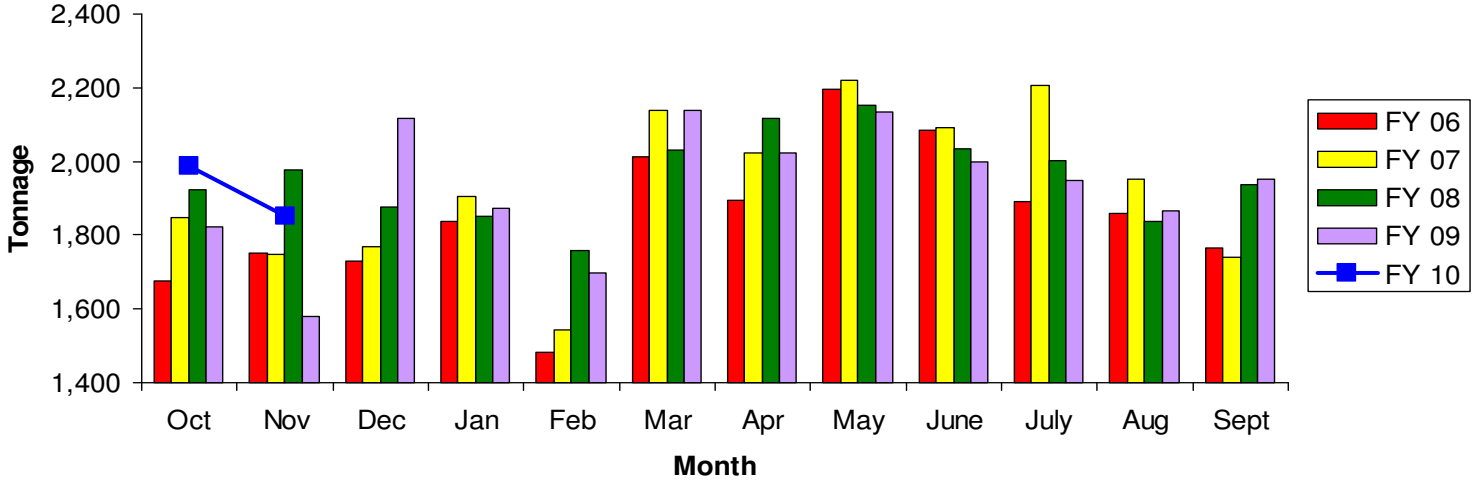
Tons Collected (Source: City of Temple Public Works Department)

Roll-Off

	FY 06	FY 07	FY 08	FY 09	FY 10	% Variance
Oct	2,781	3,187	3,302	2,486	2,314	-6.92%
Nov	2,855	3,002	2,844	2,244	1,991	-11.28%
Dec	2,650	2,563	1,912	2,635	2,067	-21.58%
Jan	2,939	3,109	2,671	2,093	2,069	-1.16%
Feb	2,643	2,924	2,757	1,988	not yet available	
Mar	3,349	3,245	2,632	2,228		
Apr	2,675	3,064	2,865	2,026		
May	3,387	3,710	3,014	2,173		
June	3,886	3,425	2,975	2,505		
July	3,145	3,719	3,144	2,578		
Aug	3,651	3,457	2,788	2,174		
Sept	3,430	3,008	2,413	2,222		
YTD Total	11,224	11,861	10,729	9,459	8,441	-10.76%

Solid Waste Tonnage- Residential

Tons Collected- Residential



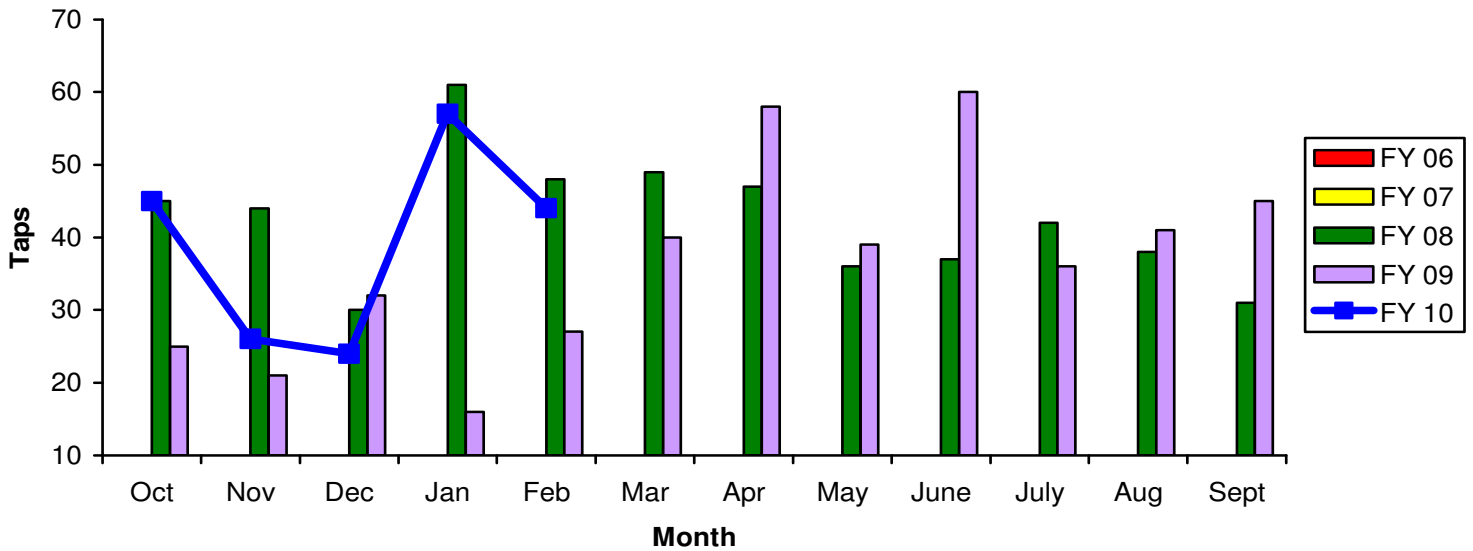
Tons Collected (Source: City of Temple Public Works Department)

Residential

	FY 06	FY 07	FY 08	FY 09	FY 10	% Variance
Oct	1,675	1,848	1,922	1,822	1,988	9.12%
Nov	1,753	1,749	1,976	1,579	1,853	17.37%
Dec	1,730	1,769	1,878	2,116	2,072	-2.05%
Jan	1,838	1,907	1,850	1,874	1,877	0.14%
Feb	1,484	1,545	1,758	1,696	not yet available	
Mar	2,012	2,137	2,030	2,139		
Apr	1,895	2,025	2,117	2,025		
May	2,197	2,222	2,153	2,133		
June	2,084	2,092	2,033	1,998		
July	1,890	2,208	2,002	1,950		
Aug	1,860	1,953	1,837	1,865		
Sept	1,766	1,742	1,939	1,953		
YTD Total	6,996	7,272	7,626	7,390	7,790	5.41%

Water Taps

New Residential and Commercial Water Taps



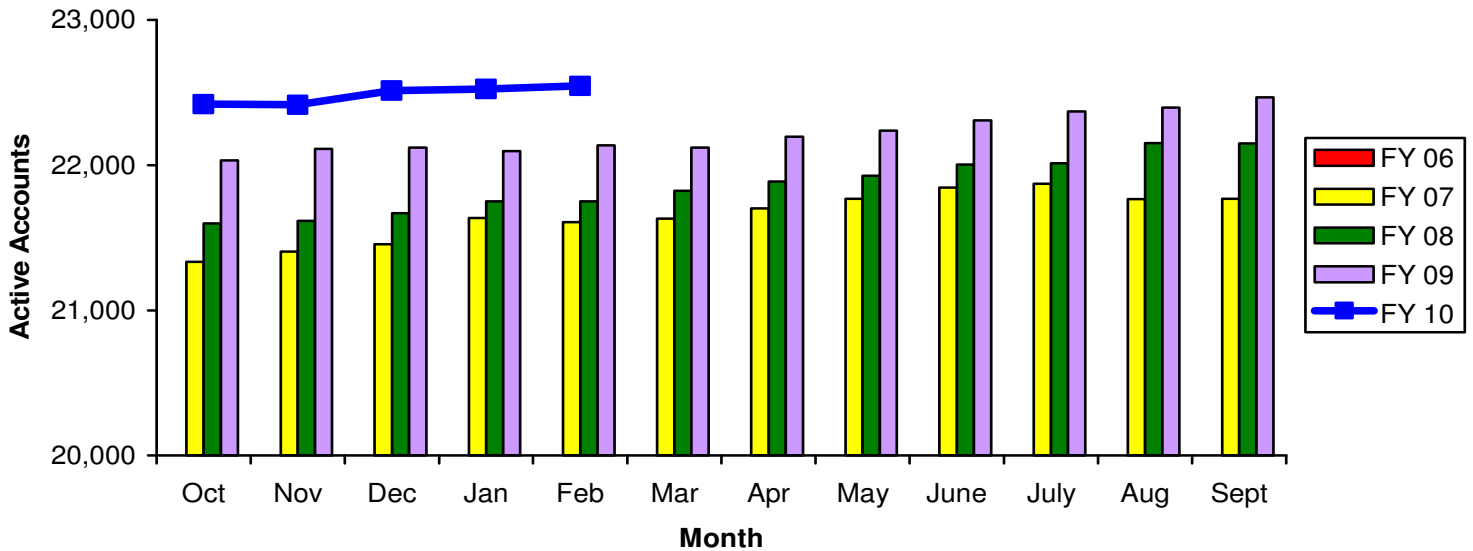
New Residential and Commercial Water Taps (Source: City of Temple Finance Department)

	FY 06*	FY 07*	FY 08	FY 09	FY 10	% Variance
Oct			45	25	45	80.00%
Nov			44	21	26	23.81%
Dec			30	32	24	-25.00%
Jan			61	16	57	256.25%
Feb			48	27	44	62.96%
Mar			49	40		
Apr			47	58		
May			36	39		
June			37	60		
July			42	36		
Aug			38	41		
Sept			31	45		
YTD Total			228	121	196	61.98%

*Historical data is archived and will be inserted pending retrieval.

Utility Accounts

Active Utility Accounts- Number of Customers Billed



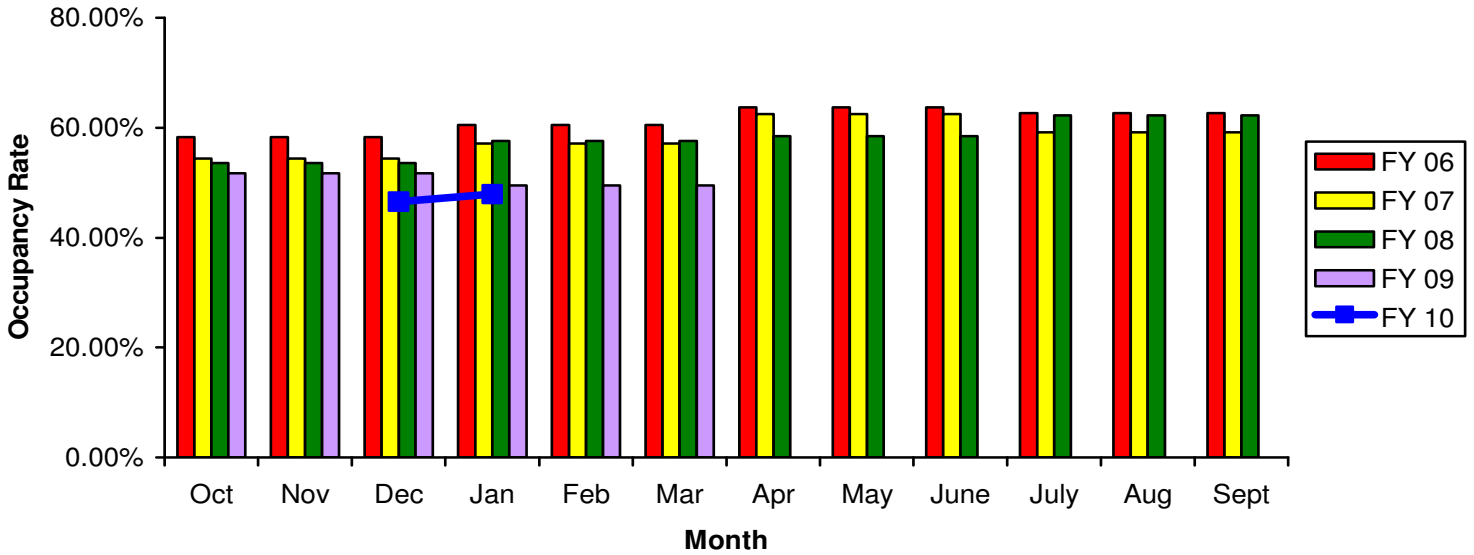
Active Utility Accounts- Number of Customers Billed (Source: City of Temple Finance Department)

	FY 06*	FY 07	FY 08	FY 09	FY 10	% Variance
Oct		21,335	21,598	22,033	22,420	1.76%
Nov		21,405	21,616	22,110	22,416	1.38%
Dec		21,454	21,670	22,120	22,514	1.78%
Jan		21,637	21,749	22,095	22,523	1.94%
Feb		21,607	21,750	22,138	22,546	1.84%
Mar		21,631	21,823	22,119		
Apr		21,703	21,888	22,195		
May		21,768	21,926	22,236		
June		21,845	22,005	22,309		
July		21,871	22,012	22,370		
Aug		21,766	22,152	22,395		
Sept		21,767	22,149	22,467		
Average		21,649	21,862	22,216	22,484	1.21%

*Historical data is archived and will be inserted pending retrieval.

Hotel-Motel Occupancy Rates

Hotel-Motel Occupancy Rates



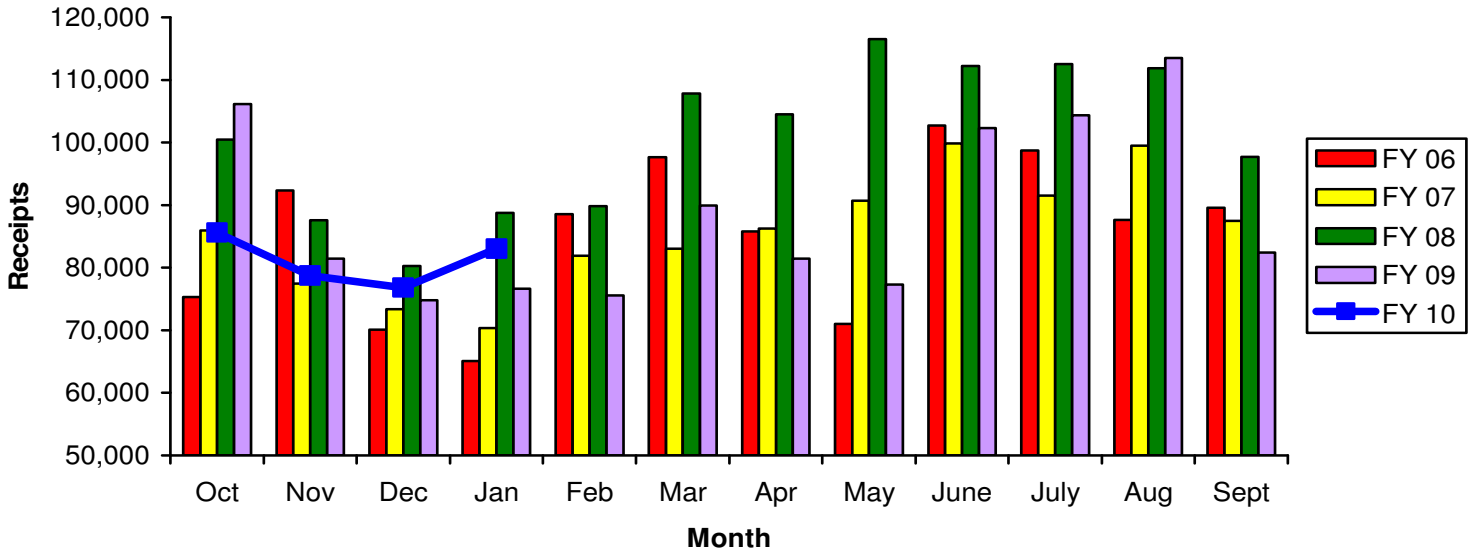
Hotel-Motel Occupancy Rates¹ (Source: City of Temple Parks and Leisure Services Department)

	FY 06	FY 07	FY 08	FY 09	FY 10	% Variance
Oct	58.30%	54.40%	53.60%	51.70%	not yet available	
Nov	58.30%	54.40%	53.60%	51.70%	not yet available	
Dec	58.30%	54.40%	53.60%	51.70%	46.50%	-10.06%
Jan	60.50%	57.10%	57.60%	49.50%	47.90%	-3.23%
Feb	60.50%	57.10%	57.60%	49.50%		
Mar	60.50%	57.10%	57.60%	49.50%		
Apr	63.70%	62.50%	58.50%	not yet available		
May	63.70%	62.50%	58.50%	not yet available		
June	63.70%	62.50%	58.50%	not yet available		
July	62.70%	59.20%	62.30%	not yet available		
Aug	62.70%	59.20%	62.30%	not yet available		
Sept	62.70%	59.20%	62.30%	not yet available		

1- Data for this indicator is currently reported by quarter instead of by month for FY 06 - FY 09.

Hotel-Motel Tax Receipts

Hotel-Motel Tax Receipts

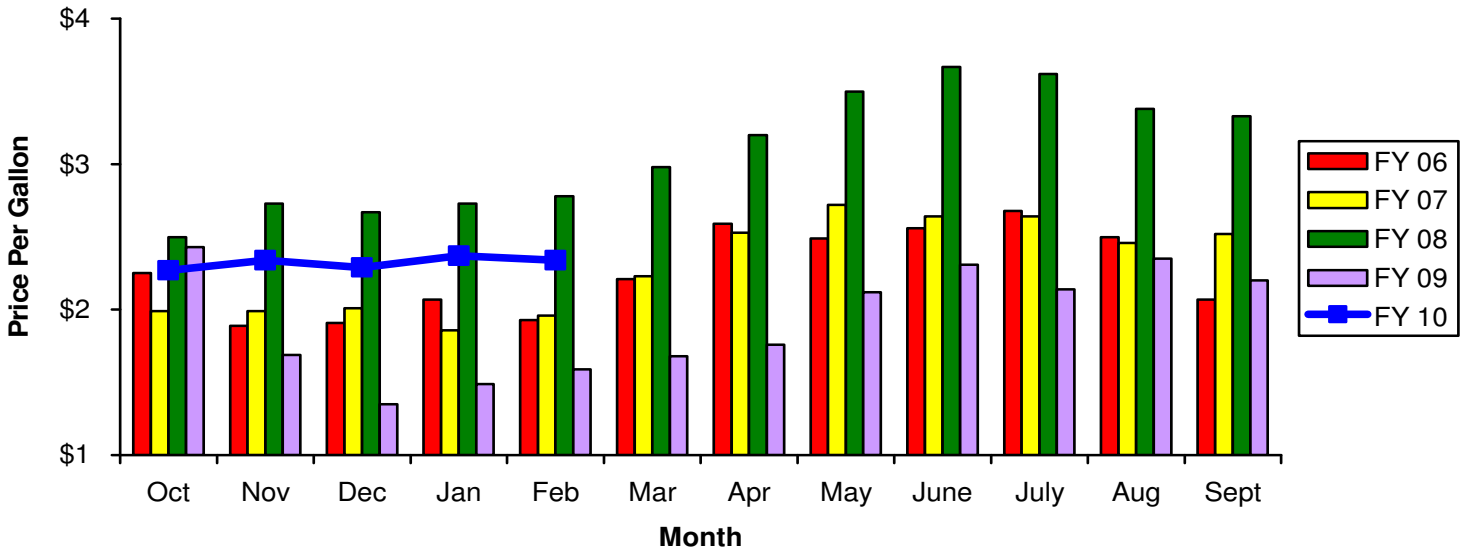


Hotel-Motel Tax Receipts (Source: City of Temple Finance Department)

	FY 06	FY 07	FY 08	FY 09	FY 10	% Variance
Oct	75,282	85,967	100,478	106,185	85,628	-19.36%
Nov	92,319	77,482	87,578	81,475	78,728	-3.37%
Dec	70,115	73,369	80,244	74,823	76,819	2.67%
Jan	65,100	70,355	88,796	76,676	83,034	8.29%
Feb	88,550	81,924	89,854	75,560		
Mar	97,698	83,027	107,825	89,948		
Apr	85,813	86,251	104,498	81,472		
May	71,029	90,700	116,587	77,307		
June	102,706	99,833	112,243	102,336		
July	98,718	91,494	112,600	104,357		
Aug	87,613	99,515	111,888	113,536		
Sept	89,603	87,450	97,732	82,404		
YTD Total	302,816	307,173	357,097	339,159	324,208	-4.41%

Fuel Prices

Monthly Averaged Fuel Price Per Gallon (Unleaded)

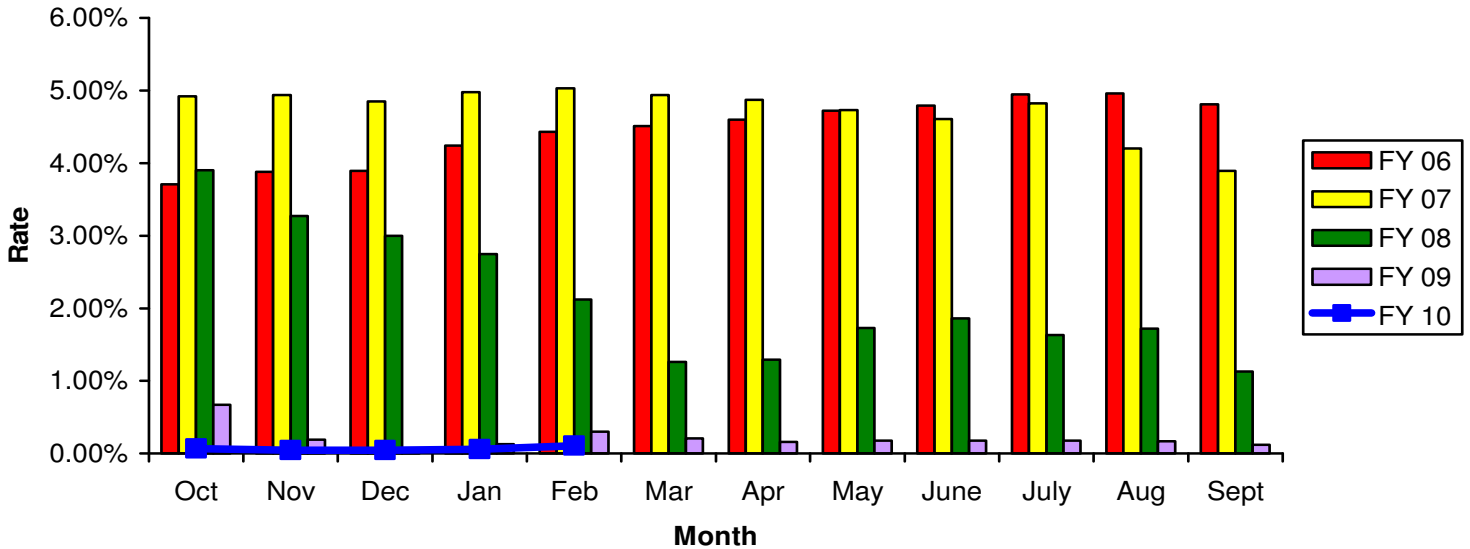


Monthly Averaged Fuel Price Per Gallon (Unleaded) (Source: City of Temple Finance Department)

	FY 06	FY 07	FY 08	FY 09	FY 10	% Variance
Oct	2.25	1.99	2.50	2.43	2.27	-6.76%
Nov	1.89	1.99	2.73	1.69	2.34	38.40%
Dec	1.91	2.01	2.67	1.35	2.29	70.01%
Jan	2.07	1.86	2.73	1.49	2.37	59.31%
Feb	1.93	1.96	2.78	1.59	2.34	46.84%
Mar	2.21	2.23	2.98	1.68		
Apr	2.59	2.53	3.20	1.76		
May	2.49	2.72	3.50	2.12		
June	2.56	2.64	3.67	2.31		
July	2.68	2.64	3.62	2.14		
Aug	2.50	2.46	3.38	2.35		
Sept	2.07	2.52	3.33	2.20		
Average	2.26	2.30	3.09	1.93	2.32	20.53%

Interest Rates

Average 3-Month Treasury Bill Rate

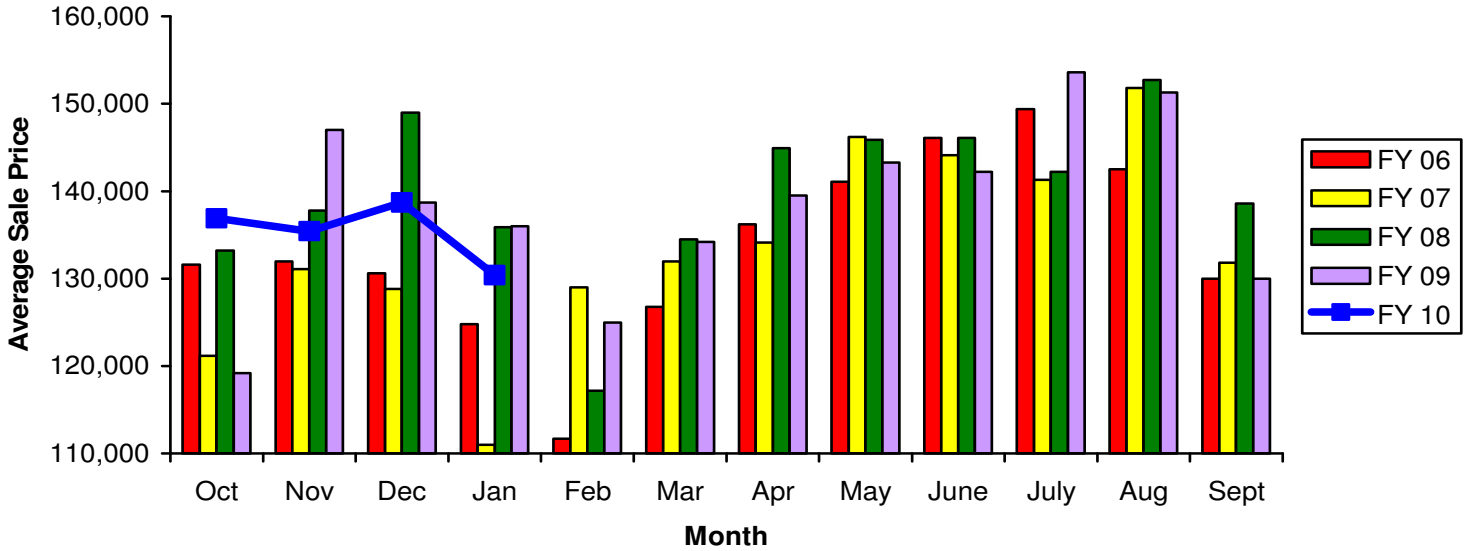


Average 3-Month Treasury Bill Rate (Source: Board of Governors of the Federal Reserve System)

	FY 06	FY 07	FY 08	FY 09	FY 10	% Variance
Oct	3.71%	4.92%	3.90%	0.67%	0.07%	-89.55%
Nov	3.88%	4.94%	3.27%	0.19%	0.05%	-73.68%
Dec	3.89%	4.85%	3.00%	0.03%	0.05%	66.67%
Jan	4.24%	4.98%	2.75%	0.13%	0.06%	-53.85%
Feb	4.43%	5.03%	2.12%	0.30%	0.11%	-63.33%
Mar	4.51%	4.94%	1.26%	0.21%		
Apr	4.60%	4.87%	1.29%	0.16%		
May	4.72%	4.73%	1.73%	0.18%		
June	4.79%	4.61%	1.86%	0.18%		
July	4.95%	4.82%	1.63%	0.18%		
Aug	4.96%	4.20%	1.72%	0.17%		
Sept	4.81%	3.89%	1.13%	0.12%		
Average	4.46%	4.73%	2.14%	0.21%	0.07%	-67.62%

Home Sale Price

Average Home Sale Price- Temple-Belton MLS

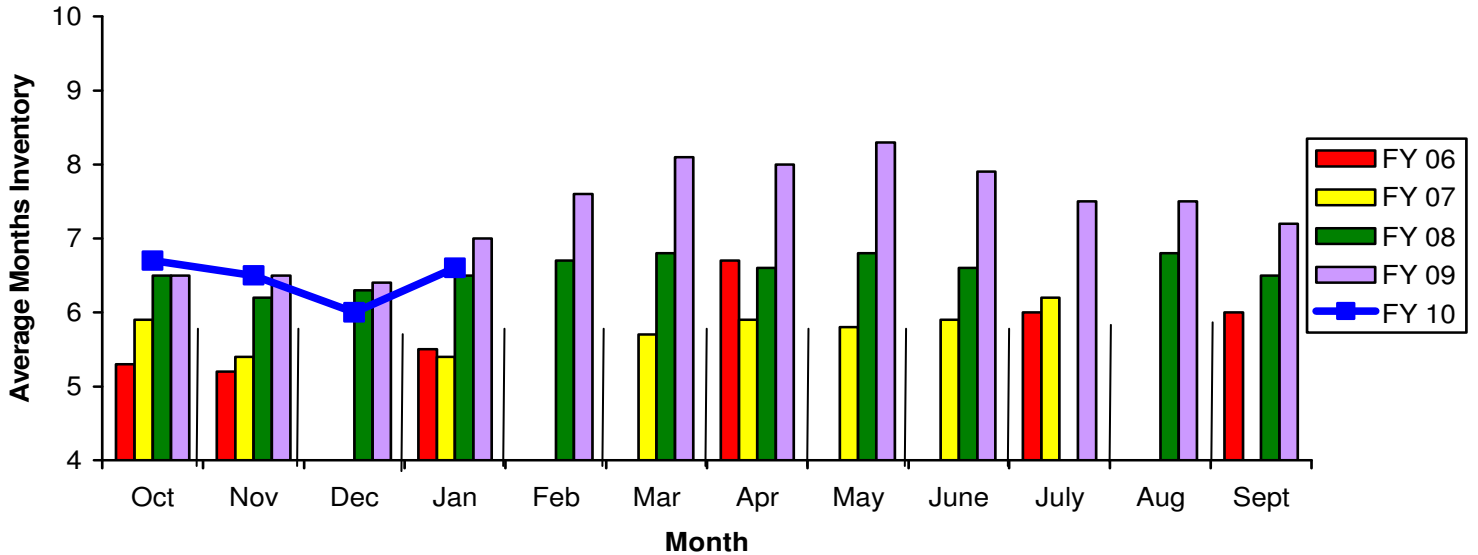


Average Home Sale Price- Temple-Belton MLS (Source: Real Estate Center at Texas A&M University)

	FY 06	FY 07	FY 08	FY 09	FY 10	% Variance
Oct	131,600	121,200	133,200	119,200	136,900	14.85%
Nov	132,000	131,100	137,800	147,000	135,400	-7.89%
Dec	130,600	128,800	149,000	138,700	138,700	0.00%
Jan	124,800	111,000	135,900	136,000	130,400	-4.12%
Feb	111,700	129,000	117,200	125,000	not yet available	
Mar	126,800	132,000	134,500	134,200		
Apr	136,200	134,100	144,900	139,500		
May	141,100	146,200	145,900	143,300		
June	146,100	144,100	146,100	142,200		
July	149,400	141,300	142,200	153,600		
Aug	142,500	151,800	152,700	151,300		
Sept	130,000	131,800	138,600	130,000		
Average	133,567	133,533	139,833	138,333	135,350	-2.16%

Housing Inventory

Average Months Inventory- Temple-Belton MLS

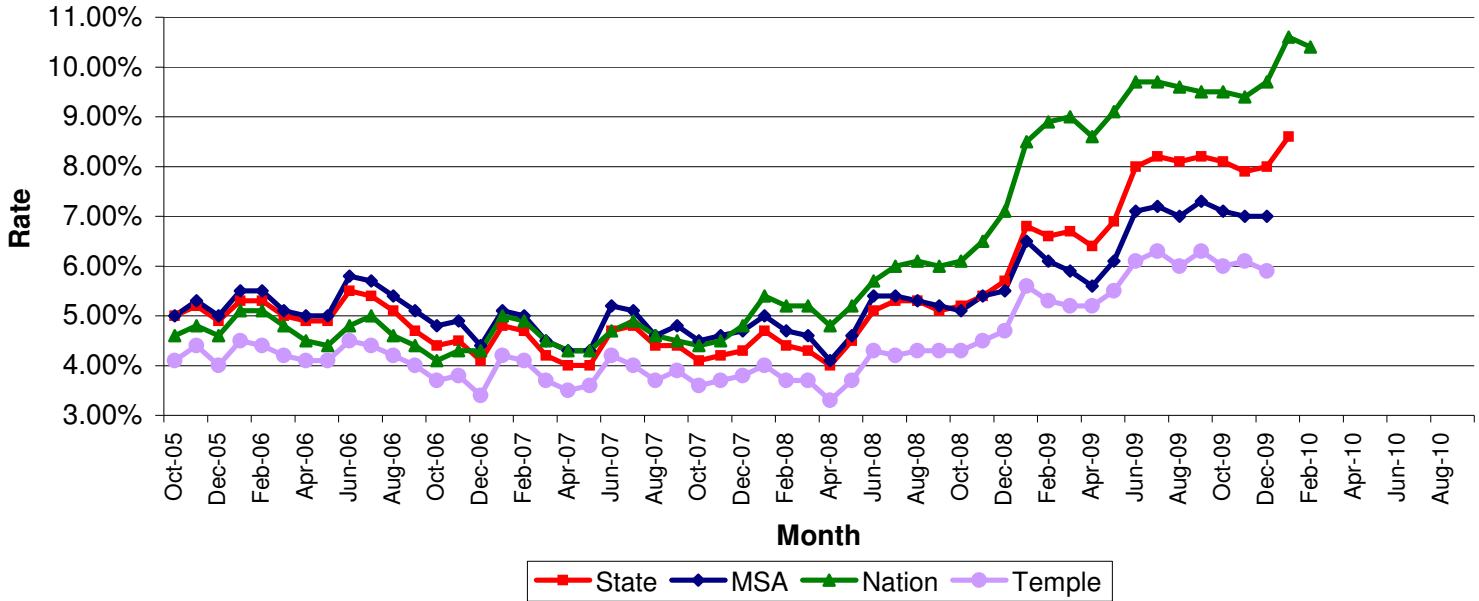


Average Months Inventory- Temple-Belton MLS (Source: Real Estate Center at Texas A&M University)

	FY 06	FY 07	FY 08	FY 09	FY 10	% Variance
Oct	5.30	5.90	6.50	6.50	6.70	3.08%
Nov	5.20	5.40	6.20	6.50	6.50	0.00%
Dec	not available	not available	6.30	6.40	6.00	-6.25%
Jan	5.50	5.40	6.50	7.00	6.60	-5.71%
Feb	not available	not available	6.70	7.60	not yet available	
Mar	not available	5.70	6.80	8.10		
Apr	6.70	5.90	6.60	8.00		
May	not available	5.80	6.80	8.30		
June	not available	5.90	6.60	7.90		
July	6.00	6.20	not available	7.50		
Aug	not available	not available	6.80	7.50		
Sept	6.00	not available	6.50	7.20		

Unemployment Rate

Non-Seasonally Adjusted Unemployment Rate



Non-Seasonally Adjusted Unemployment Rate (Source: US Department of Labor)

City of Temple

	FY 06	FY 07	FY 08	FY 09	FY 10	% Variance
Oct	4.10%	3.70%	3.60%	4.30%	6.00%	39.53%
Nov	4.40%	3.80%	3.70%	4.50%	6.10%	35.56%
Dec	4.00%	3.40%	3.80%	4.70%	5.90%	25.53%
Jan	4.50%	4.20%	4.00%	5.60%	not yet available	
Feb	4.40%	4.10%	3.70%	5.30%	not yet available	
Mar	4.20%	3.70%	3.70%	5.20%		
Apr	4.10%	3.50%	3.30%	5.20%		
May	4.10%	3.60%	3.70%	5.50%		
June	4.50%	4.20%	4.30%	6.10%		
July	4.40%	4.00%	4.20%	6.30%		
Aug	4.20%	3.70%	4.30%	6.00%		
Sept	4.00%	3.90%	4.30%	6.30%		

Unemployment Rate (cont'd)

Non-Seasonally Adjusted Unemployment Rate (Source: US Department of Labor)

Killeen-Temple-Fort Hood Metropolitan Statistical Area

	FY 06	FY 07	FY 08	FY 09	FY 10	% Variance
Oct	5.00%	4.80%	4.50%	5.10%	7.10%	39.22%
Nov	5.30%	4.90%	4.60%	5.40%	7.00%	29.63%
Dec	5.00%	4.40%	4.70%	5.50%	7.00%	27.27%
Jan	5.50%	5.10%	5.00%	6.50%	not yet available	
Feb	5.50%	5.00%	4.70%	6.10%	not yet available	
Mar	5.10%	4.50%	4.60%	5.90%		
Apr	5.00%	4.30%	4.10%	5.60%		
May	5.00%	4.30%	4.60%	6.10%		
June	5.80%	5.20%	5.40%	7.10%		
July	5.70%	5.10%	5.40%	7.20%		
Aug	5.40%	4.60%	5.30%	7.00%		
Sept	5.10%	4.80%	5.20%	7.30%		

State of Texas

	FY 06	FY 07	FY 08	FY 09	FY 10	% Variance
Oct	5.00%	4.40%	4.10%	5.20%	8.10%	55.77%
Nov	5.20%	4.50%	4.20%	5.40%	7.90%	46.30%
Dec	4.90%	4.10%	4.30%	5.70%	8.00%	40.35%
Jan	5.30%	4.80%	4.70%	6.80%	8.60%	26.47%
Feb	5.30%	4.70%	4.40%	6.60%	not yet available	
Mar	5.00%	4.20%	4.30%	6.70%		
Apr	4.90%	4.00%	4.00%	6.40%		
May	4.90%	4.00%	4.50%	6.90%		
June	5.50%	4.70%	5.10%	8.00%		
July	5.40%	4.80%	5.30%	8.20%		
Aug	5.10%	4.40%	5.30%	8.10%		
Sept	4.70%	4.40%	5.10%	8.20%		

United States

	FY 06	FY 07	FY 08	FY 09	FY 10	% Variance
Oct	4.60%	4.10%	4.40%	6.10%	9.50%	55.74%
Nov	4.80%	4.30%	4.50%	6.50%	9.40%	44.62%
Dec	4.60%	4.30%	4.80%	7.10%	9.70%	36.62%
Jan	5.10%	5.00%	5.40%	8.50%	10.60%	24.71%
Feb	5.10%	4.90%	5.20%	8.90%	10.40%	16.85%
Mar	4.80%	4.50%	5.20%	9.00%		
Apr	4.50%	4.30%	4.80%	8.60%		
May	4.40%	4.30%	5.20%	9.10%		
June	4.80%	4.70%	5.70%	9.70%		
July	5.00%	4.90%	6.00%	9.70%		
Aug	4.60%	4.60%	6.10%	9.00%		
Sept	4.40%	4.50%	6.00%	9.50%		