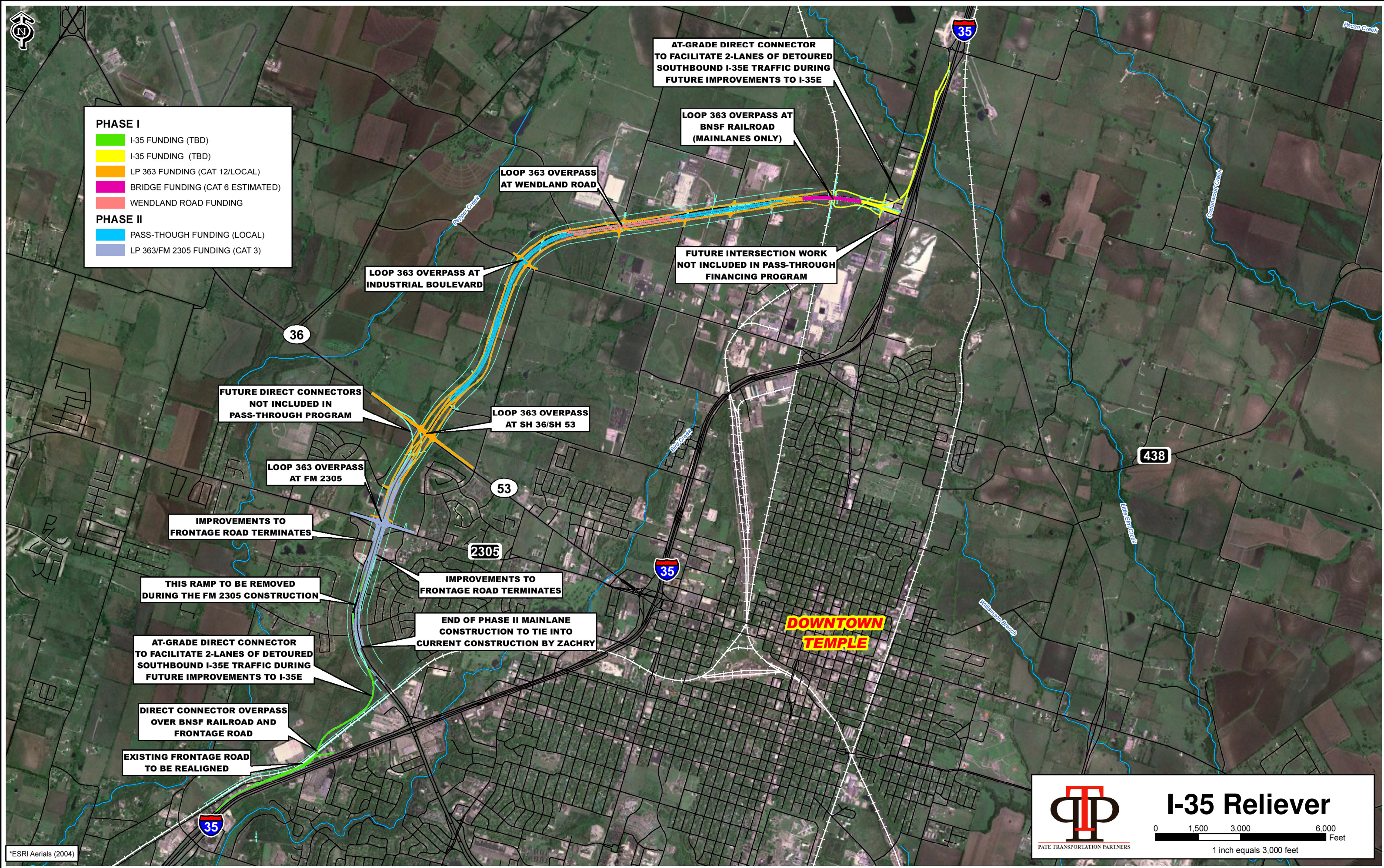




- PHASE I**
- █ I-35 FUNDING (TBD)
 - █ I-35 FUNDING (TBD)
 - █ LP 363 FUNDING (CAT 12/LOCAL)
 - █ BRIDGE FUNDING (CAT 6 ESTIMATED)
 - █ WENDLAND ROAD FUNDING
- PHASE II**
- █ PASS-THOUGH FUNDING (LOCAL)
 - █ LP 363/FM 2305 FUNDING (CAT 3)



*ESRI Aerials (2004)

I-35 Reliever

0
1,500
3,000
6,000

Feet

1 inch equals 3,000 feet